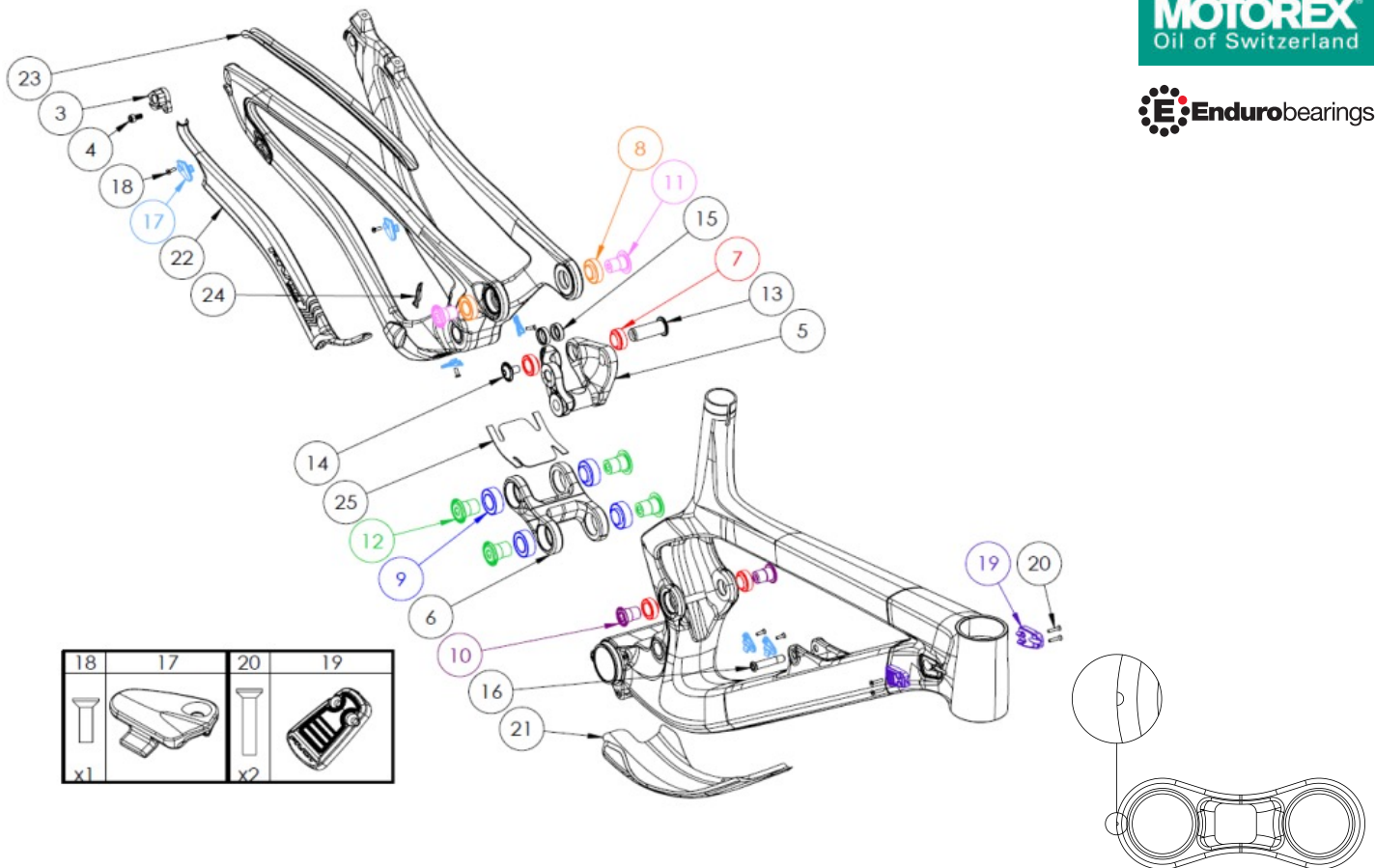


PHOENIX 29 CARBON				
Hardware				
NUMBER	PART NUMBER	DESCRIPTION	TORQUE	*
3	FP-RDH-TA-12MM-BLK-V3	Rear Derailleur Hanger 12mm TA		
4	FP-SCW-SCK-M5*10	M5x10 Rear Derailleur Hanger Screw	7 Nm (5 lb·ft)	G
5	FP-LNK-UL-42.5MM-V2-R1	Progressive Phoenix 29 Upper Link		
6	FP-LNK-LL-BLK-V7-R1	70mm Out-to-Out Lower Link		
7	FP-BRG-3802-LLUMAXECN	24mm 3802 Extended Max Bearing		R
8	FP-BRG-6902-LLUMAXECN	28mm 6902 Ext'd Max-E Bearing		R
9	FP-BRG-3903-LLUE	30mm 3903 Ext'd Lower Link Bearing		R
10	FP-BLT-M14*20-V1-R2	M14x20 Front Triangle/Upper Link Bolt for 3802 Bearing	35 Nm (27 lb·ft)	L
11	FP-BLT-M14*20-BLK-V2-R2	M14x20 Rear Triangle Bolt	35 Nm (27 lb·ft)	L
12	FP-BLT-M16*22-BLK-V2-R2	M16x22 Lower Link Bolt	35 Nm (27 lb·ft)	L
13	FP-PIN-15*40-V1-R1	15x40mm M8 Rear Shock Pin		G
14	FP-BLT-M8*12-V1-R1	M8x12 Rear Shock Bolt for 3802 Bearing	13 Nm (10 lb·ft)	L
15	FP-WSH-SPC-15*4-V1-R1	M15x4 Rear Shock Spacer		
16	FP-BLT-M8*38-BLK-V2	M8x38 Front Shock Bolt	13 Nm (10 lb·ft)	G/L
17	FP-CLM-MECH-FRM-V1	Internal Routing Cable Clamp		
18	FP-SCW-FLT-M3*10	M3x10 Cable Clamp Screw (Included w/ Clamp)		
19	FP-PRO-PHXC2-HT-V1-R1	Phoenix Carbon Headtube Guard		
20	FP-SCW-FLT-M3*15	M3x15 Headtube Guard Screw (Included w/ HT Guard)		
21	FP-PRO-PHXC29-DT-V1-R1	Phoenix Carbon 29 Downtube Protector		
22	FP-PRO-PHXC29-CS-V1-R1	Phoenix Carbon 29 Chainstay Protector		
23	FP-PRO-PHXC29-SS-V1-R1	Phoenix Carbon 29 Seatstay Protector		
24	FP-PRO-PHXC29-UR-V1-R1	Phoenix Carbon 29 Upright Protector		
25	FP-PRO-70MM-LL-V1-R1	70mm Lower Link Protector		
26	FRAME SIZE STICKER - XS/SM/MD/LG/XL	Frame Size Sticker		
Axles				
NUMBER	PART NUMBER	DESCRIPTION	TORQUE	*
101	157MM THROUGH AXLE V4	157mm DH Rear Axle	15 Nm (11 lb·ft)	G
102	-	12mm Axle Washer (Included w/ Axle)		
Bike Care				
*	PRODUCT TYPE	RECOMMENDED PRODUCT		
G	Grease	Motorex Bike Grease 2000		
L	Thread Locker**	Loctite Thread Locker #243 (or equivalent)		
G/L	Grease (Bolt Shaft) / Thread Locker (Bolt Threads)	See Above		
A	Anti-Seize	Motorex Copper Paste		
R	Retaining Compound	Loctite Retaining Compound #620 (or equivalent)		

**Threadlocker should always be applied to the corresponding female threads for the bolt specified



ATTENTION: Lower links are marked with a notch on the front of the non-drive side. The link must be oriented where the notch points to the front triangle.

